

Washington's Birthday Bash



Tournament Handbook

February 15-16, 2025

Rocky Mount Event Center

285 N Main Street, Rocky Mount, NC, 27801



We are very pleased to have you at **Washington's Birthday Bash** hosted by **Showtime Events**. This packet should contain all the information you need to compete in this year's event. Please be sure to read everything very carefully as we will not have a coaches' meeting prior to playing on Saturday.

SCHEDULES:

All schedules and results will be posted on the AES website.

EVENT SCHEDULE

TEAM CHECK-IN:

Teams can check in at the facility beginning any time before their first match on **Saturday (2/17)**. Doors open at 7 am. Please allow enough time to get through the check-in process prior to your first match. If your roster is loaded into AES prior to Thursday @ midnight, you do not need to bring a signed copy of your roster. If you miss the deadline, a signed copy of your roster is required at check-in.

There will be no early check-in on Friday night.

VENUE:

Rocky Mount Event Center | 285 N Main Street, Rocky Mount, NC, 27801

PARKING:

The Rocky Mount Event Center charges \$10 for parking. There is a parking lot at the facility and a parking lot and two others that are within walking distance. Parking is \$10 at all lots. Do not park in the fire lanes and do not park illegally. Do not park on the railway track. Violators will be towed at the owner's expense.

SPECTATOR TICKETS:

All spectators will need a wristband to enter the facility. Kids 10 and under are FREE. Coaches will receive a FREE wristband at team check-in (2 coaches maximum. No chaperones or team representatives). Admission is \$30 for a weekend pass or \$20 for a single-day pass.

CASH-ONLY TICKET SALES AT THE DOOR. There are NO online ticket sales and NO credit card sales at the door.

The box office will be open on Friday, February 14th between the hours of 4 pm - 9 pm to allow spectators to purchase tickets before the event if they so chose. Spectators may also purchase tickets on the day of the tournament. Please allow ample time before the first match to purchase your ticket.

The ATM on-site will be filled on Friday. However, it will likely run out so please bring cash in advance.

WRISTBANDS:

Do NOT take your wristband off for any reason. If you take it off or lose it, you will be charged for a new wristband. No exceptions.

SEATING:

There are plenty of bleachers at each court for spectator seating. No outside chairs are allowed in the facility.

FOOD/CONCESSIONS:

No outside food, drinks, or coolers will be allowed into the facilities. Concessions are sold at the facility.

AGE-SPECIFIC RULES:

All teams playing in 11/12s divisions are allowed to use the “step-in line” to serve. The step-in line will be 6’6” into the court. If a player gets 3 serves in a row from the step-in line, they will be asked to move back beyond the end-line until their service turn is ended.

WARM-UP PROCEDURES:

Before your *first match*, teams will share the court for 2 mins (please keep balls on your own side). After the share time, each team will then get the entire court for 4 mins (serving must be a part of this time). The team that elects to serve first will get the court first.

POOL-PLAY FORMAT:

In all pools, matches will be best 2 of 3 sets with sets 1 & 2 played to 25 points. If necessary, a 3rd and deciding set will be played to 15 points. All sets have no cap and must be won by 2 points.

Pool play will consist of 3 or 4 team pools. Teams in 3-team pools will be Auto 3s meaning they will play 3 sets to 25 no matter the outcome.

Each team is guaranteed 5 matches or 10 sets for the weekend.

TIEBREAKERS:

There will be NO PLAYOFFS during pool play (not even for Gold or Silver). All ties will be solved via the following protocol:

- Match Percentage
- Head-to-head (ONLY used if it is 2-team tiebreaker)
- Set Percentage
- Point Percentage
- Flip a coin

All calculations are viewable on AES online. Please monitor scores as they are updated to be sure this information is accurate throughout the day.

STREAMING:

BallerTV will be streaming matches at this event. That link is [here](#)

AWARDS:

Medals will be given to 1st place and 2nd place in the GOLD bracket of each division only. Medals are for players only, no medals will be issued to coaches.

RECRUITING

Showtime Events is pleased to announce CaptainU will be our official recruitment partner for the season. Take this opportunity to create your own personal or team CaptainU profile. Links are below to begin the scouting process!

PLAYER: Click [HERE](#) to create your FREE CaptainU profile and get college coach exposure all season long.

BOYS POLICY:

Any team looking to include a boy on their roster **MUST** have their roster loaded in AES, and **MUST** email Troy Helton (troy.showtimeevents@gmail.com) for approval **BEFORE** the tournament.

- 12 & Under – Boys can play co-ed
- 13s – Must play in 14s or older team
- 14s – Must play in 16s or older team
- 15-18 – Not eligible to play.

TOURNAMENT DIRECTOR

Peyton Johnston
502-889-6320
peyton.johnston@lindsey.edu

THE OFFICIAL BALL



Showtime Events is excited to partner with Baden as our official ball sponsor for the 2025 season.



badensports.com



Balltime is the first-ever volleyball AI platform

Trusted by 30,000+ players worldwide for video and analytics

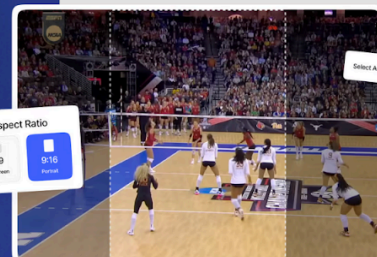
- ✓ Easy-to-use interface
- ✓ Instant highlight videos
- ✓ Unbeatable price

CREATE ACCOUNT

Start your free trial today 🙌



- ✓ Break down film with Smart AI Filters
- ✓ Upload your footage from any source
- ✓ Highlight Videos created at Lightning Speed
- ✓ Ball Trajectories, Tempos & Serve speed
- ✓ Auto Vertical Reels... and more!



SHOWTIME EVENTS
PARTNERS



Official Volleyball AI Partner



Official Ball Partner



Official Merchandise Partner



Official Software Partner



Official Wellness Partner



Official Uniform Partner



Official Streaming Partner



Official Recruiting Partner