

# Redwood Rumble



## Tournament Handbook

January 4-5, 2025

### Roebbelen Center

700 Event Center Dr, Roseville, CA 95678

We are very pleased to have you at the **Redwood Rumble** tournament hosted by **Showtime Events**. This packet should contain all the information you need to compete in this year's event. Please be sure to read everything very carefully as we will not have a coaches' meeting prior to playing on Saturday.

## **SCHEDULES:**

All schedules and results will be posted on the AES website. The direct link is below:

[AES Schedule](#)

## **TEAM CHECK-IN:**

Teams can check in at the facility beginning any time before their first match on **Saturday**. Doors open at 7 am. Please allow enough time to get through the check-in process prior to your first match. If your roster is loaded into AES prior to Thursday @ midnight, you do not need to bring a signed copy of your roster. If you miss the deadline, a signed copy of your roster is required at check-in.

**VENUE:** Doors open at 7am with the first matches beginning at 8am.

**Roebbelen Center 700 Event Center Dr, Roseville, CA 95678**

## **PARKING:**

The facility charges **\$15** per day for parking (which does allow in & out) but we encourage you to carpool to save some money. Please do not park in the fire lanes or park illegally. Violators will be towed at the owner's expense.

## **TICKETS:**

All spectators will need a wristband. Kids ages 10 & under are **FREE**. Everyone else will need a wristband. Coaches will receive a wristband at team check-in (2 coaches maximum. No chaperones or team representatives).

Admission is **\$30** for a weekend pass or **\$20** for a single-day pass. Online sale only via the link below. No credit card or cash sales at the door.

[CLICK HERE FOR TICKETS](#)

## **WRISTBANDS:**

Wristbands must be worn on the wrist the whole time - not on purses or held in your hand. Also the ticketing program only allows the ticket to be scanned once - so when you receive your wristband (one-day) or two wristbands (weekend), do NOT lose them for any reason. If you take off your wristband or lose it, you will be charged for a new wristband. No exceptions.

## **AGE-SPECIFIC RULES:**

All teams playing in 10/11s divisions are allowed to use the “step-in line” to serve. The step-in line will be 6’6” into the court. If a player gets 3 serves in a row from the step-in line, they will be asked to move back beyond the end-line until their service turn is ended.

## **WARM-UP PROCEDURES:**

Before your *first match*, teams will share the court for 2 mins (please keep balls on your own side). After the shared time, each team will then get the entire court for 4 mins (serving must be a part of this time). The team that elects to serve first will get the court first.

## **POOL-PLAY FORMAT:**

In all pools, matches will be best 2 of 3 sets with sets 1 & 2 played to 25 points. If necessary, a 3rd and deciding set will be played to 15 points. All sets have no cap and must be won by 2 points. Pool play will consist of 3, 4, or 5 team pools. All teams are guaranteed a minimum of 5 matches (or 10 sets) for the weekend.

## **TIEBREAKERS:**

There will be NO PLAYOFFS during pool play (not even for Gold or Silver). All ties will be solved via the following protocol:

- Match Percentage
- Head-to-head (ONLY used if it is 2-team tiebreaker)
- Set Percentage
- Point Percentage
- Flip a coin

All calculations are viewable on AES online. Please monitor scores as they are updated to be sure this information is accurate throughout the day.

## **SEATING:**

There are plenty of bleachers at each court for spectator seating. No outside chairs are allowed in the facility but they will allow bleacher seats for back support.

## **FOOD/CONCESSIONS:**

No outside food, drinks, or coolers will be allowed into the facilities. Concessions are sold at the facility.

## **STREAMING:**

All matches this weekend will be streamed on BallerTV. Click on this link to view: [BALLER TV](#)

## **AWARDS:**

Medals will be given to 1st place and 2nd place in the GOLD bracket of each division only. Medals are for players only, no medals will be issued to coaches.

## **RECRUITING**

Showtime Events is pleased to announce CaptainU will be our official recruitment partner for the 2025 volleyball season. Take this opportunity to create your own personal or team CaptainU profile. Links are below to begin the scouting process!

- **PLAYER:** Click [HERE](#) to create your FREE CaptainU profile and get college coach exposure all season long.

## **BOYS POLICY:**

Any team looking to include a boy on their roster **MUST** have their roster loaded in AES, and **MUST** email Troy Helton ([troy.showtimeevents@gmail.com](mailto:troy.showtimeevents@gmail.com)) for approval **BEFORE** the tournament.

- 12 & Under – Boys can play co-ed
- 13s – Must play in 14s or older team
- 14s – Must play in 16s or older team
- 15-18 – Not eligible to play.

## **TOURNAMENT DIRECTOR**

**Troy Helton**

[troy.showtimeevents@gmail.com](mailto:troy.showtimeevents@gmail.com)

# THE OFFICIAL BALL



Showtime Events is excited to partner with Baden as our official ball sponsor for the 2025 season.



badensports.com



## Balltime is the first-ever volleyball AI platform

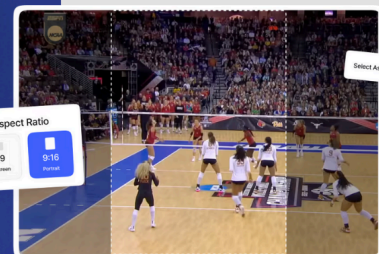
Trusted by 30,000+ players worldwide for video and analytics

- ✓ Easy-to-use interface
- ✓ Instant highlight videos
- ✓ Unbeatable price



CREATE ACCOUNT

Start your free trial today 🙌



- ✓ Break down film with Smart AI Filters
- ✓ Upload your footage from any source
- ✓ Highlight Videos created at Lightning Speed
- ✓ Ball Trajectories, Tempos & Serve speed
- ✓ Auto Vertical Reels... and more!

# SHOWTIME EVENTS PARTNERS



Official Volleyball AI Partner



Official Ball Partner



Official Merchandise Partner



Official Software Partner



Official Wellness Partner



Official Uniform Partner



Official Streaming Partner



Official Recruiting Partner